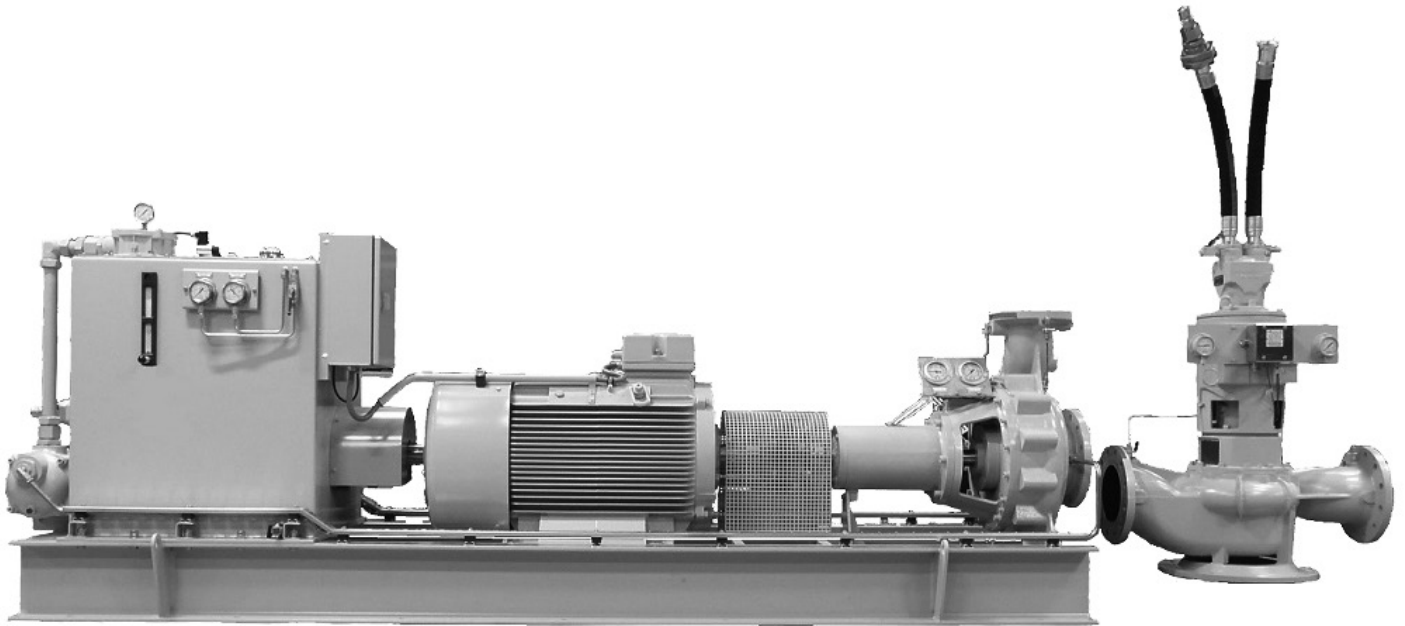


Productsheet: **Electric Fire Pump**

Capacity: 55 m³/h to 800 m³/h at 120 mWC



At IRON Pump, we do not have a product-line for our Ellehammer Fire Water Pumps. Every pump is constructed specifically for the buyers needs.

The pump shown here is a medium sized Electric Fire Pump system. The maximum capacity is 800 m³/h at 120 m. This system is suited for small vessels, such as LNG, FLNG, FSRU or VLCC, which have the electrical energy capacity

BENEFITS

There is not a single vessel at sea that we cannot equip with an Ellehammer Fire Water Pump.

An IRON Pump solution gives you the security that only a company with a hundred-year history can give you.

TYPICAL APPLICATIONS

RECOMMENDED FOR

- FSRU
- Tankers
- FLNG
- VLCC
- LNG

All our experience becomes your advantage, you can let our guidance and advice help you, when you are out to find the right solution for your vessel. Contact us for further details.

Telephone +45 44 91 67 88